

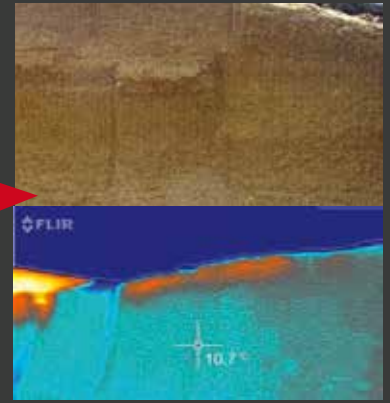
SILAGE CUTTING ATTACHMENTS

EMILY DEFACER RANGE

- For a clean and smooth clamp face
- Eliminate secondary fermentation: no air-ingress
- Improved feed quality
- Eliminate wastage
- Using daily fresh silage

STOP Wasting money

High temperature & strong fermentation → Low temperature & weak fermentation



MOBILE ROTOR BUCKET



- New design more user-friendly
- New square drive system for more reliable defacer resulting in improved efficiency
- New size up to 2,90m³
- Backward rotating rotor for optimum filling of the bucket
- Mobile rotor with hydraulic rams for automatic and regulated lowering
- A versatile attachment to load chopped grass silage, wholecrop, maize silage and dry food
- A complete range for front loaders and telescopic handlers

EMILY ADVANTAGES

- Backwards rotating rotor: optimized filling of the bucket and clean clamp face.
- Only one bucket to load silage and concentrates: time saving.
- No air-ingress, improvement of zootechnical performances
- New option : bolted adaptation
- NEW : Large rotor diameter on bucket side 3 for optimal bucket filling



ROTOR ON FRAME



- Ideal to cut large quantities of Silage (designed mainly for maize silage).
- Double driving with series powerful motor.
- Durable and secure driving thanks to the Square Drive System.
- Reinforced structure with rotor in Hardox 8mm

HEAVY DUTY



SCIE'REX BUCKET



NEW

- The Scie'Rex bucket with silage defacer is designed for cutting any type of silage and fodder, even long grass silage (maize silage, chopped grass silage, grass cut by forage wagon, wholecrop, silage bales...).
- Compact bucket (easy access to narrow sheds)

EMILY ADVANTAGES

- Excellent filling capacity: +50% of loaded silage.
- Clean and smooth clamp face
- Maximize cattle rumination : the Scie'Rex improves feed quality (no disintegration of the silage)
- Versatile: suitable for handling maize and dry food.
- No air-ingress: Save money and improve cattle health using dairy fresh silage.
- Thanks to the Soft Control System (patented hydraulic control) the Scie'Rex defacer fits onto any machinery handler (regardless oil flow)



Silo clamp cutting



Silage and hay bales cutting



Mixer wagon loading



Loading the top of the clamp:
patented deflector in low position



Loading the bottom of the clamp:
patented deflector in high position

PRODUCTS	HYDRAULIC FLOW AND PRESSURE (MINIMUM)	CUTTING WIDTH (M)	CAPACITY (M ³)	EMPTY WEIGHT (KG)
Scie'Rex Bucket	35 / min and 180 bar	2,20	1,20	720
		2,40	1,90	970
Mobile Rotor Bucket for tractor loader	50 L / min and 180 bar	1,30	0,70	400
		1,50	0,81	450
		1,70	0,92	495
		1,90	1,03	520
		2,10	1,13	540
		2,30	1,24	590
		2,50	1,35	620
Mobile Rotor Bucket for telescopic handler	60 L / min and 180 bar	2,10	1,65	855
		2,10	2,40	1030
		2,30	1,80	900
		2,30	2,65	1 140
		2,50	2,00	955
Rotor on frame	70 L / min and 180 bar	2,50	2,90	1 250
		2,40	X	600

EMILY - ZA Les Landes - 29800 Tréflévénez - France
T. +33 (0)2 98 21 72 72 / F. +33 (0)2 98 21 86 14
export@emily.fr

www.emily.fr

