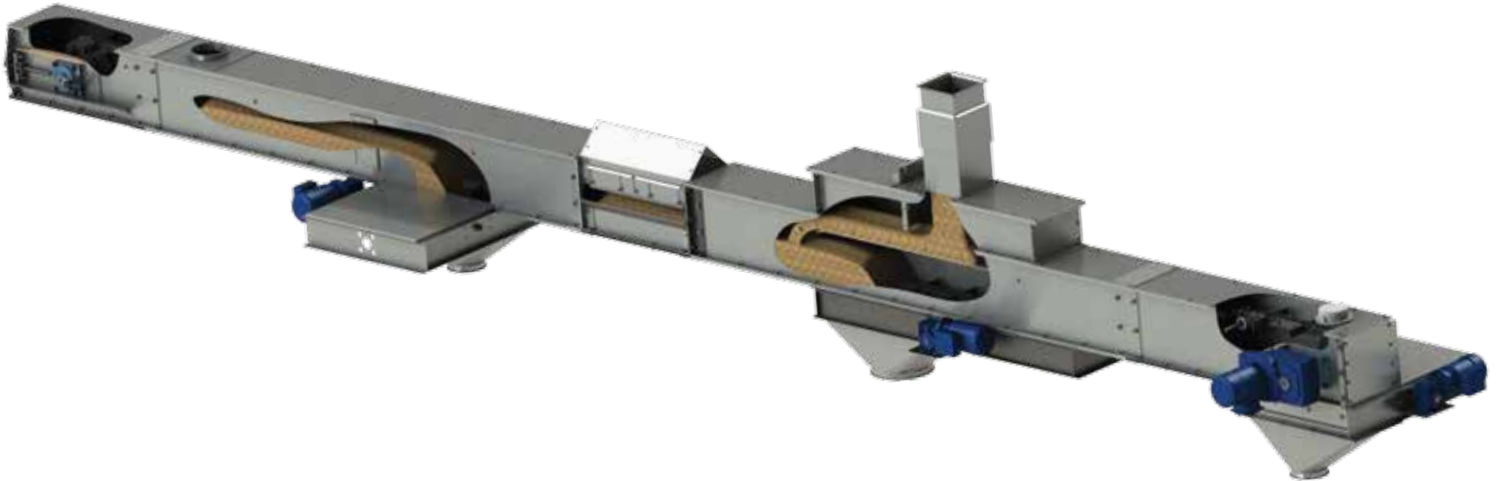




CHAIN CONVEYOR

Chain conveyors are ideal for product transportation horizontally or at an angle of up to 7 degrees. Made of galvanized steel and high-quality components. Available various models depending on required capacity. Developed for daily, continuous all year round operation. It provides high performance and reliability, quick to assemble and compact dimensions.

We offer customized solutions to meet specific customer needs.



STANDARD EQUIPMENT

- Tension section with tension device
- Extension section with 2 inspection windows
- Extension sections in needed length
- Chain return rolls
- Chain
- Drive section
- PEHD bottom wear out plates t=10 mm
- Connection plates between sections
- Inlet with flange
- Outlet with flange
- NORD gearbox with electric motor
- Overloading membrane with cover

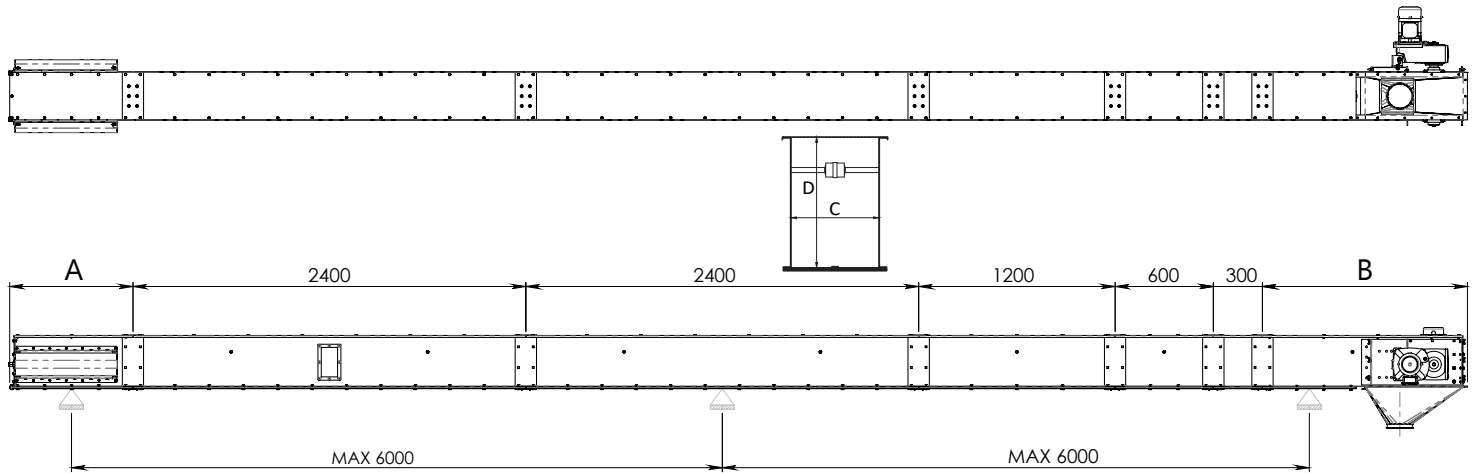
ACCESSORIES

- Inlet / Outlet flange (round or square)
- Double sided inlet
- Metering inlet section
- Capacity slide for flow control
- Outlet slide with manual, electric or pneumatic control
- Return buckets for chain
- Chain cleaning brush
- Weather cover for motor
- Additional inspection windows
- Shaft speed monitor with cover
- Compliance with ATEX, zone 21, group II 2D/0D





CHAIN CONVEYOR



Model	K40	K60	K100	K120	K150	K200	K250	K300	K350	K550
Capacity*, up to t/h	20-40	40-60	60-100	100-120	120-150	150-200	200-250	250-300	300-350	400-550
Capacity, up to m ³ /h	26-53	53-80	80-133	133-160	160-200	200-266	266-333	333-400	400-466	533-733
Chain speed, m/s	0.26-0.65	0.40-0.60	0.56-0.70	0.49-0.59	0.56-0.69	0.54-0.72	0.59-0.75	0.59-0.71	0.55-0.65	0.57-0.70
Chain type, FV	63-100	63-100	90-100	90-100; 112-125	112-125		140-160; 180-160	140-160; 180-160; 250-160	180-160; 250-160	180-160; 250-160; 315-160
Tension (A), mm	750				1250					
Drive (B), mm	1250									
Width (C), mm	200	230		330			390	430	555	800
Height, (D), mm	280	310	360	360	410	520	520	600	600	650
Thickness, mm side/top/floor	2/1.5/2	2/1.5/2	2/1.5/2	2/1.5/2	3/1.5/2	3/1.5/2	3/1.5/2	3/1.5/3	3/1.5/3	4/3/5

* Capacity for wheat 0.75 t/m³, 15% moisture content
Further capacity upon request

